



P.O. Box 141613, Anchorage, AK 99514

1997 FIELD TRIP SCHEDULE

General Information:

The purpose of the Alaska Native Plant Society field trips is to enjoy our Alaskan plants in their native habitats. The trips are designed to explore a variety of plant communities for educational and appreciative values. Hikes are leisurely paced to allow plenty of time for plant observation. Trips will be held rain or shine, so be prepared.

Please read the individual trip listing to determine the level of difficulty, allotted time and special requirements for each trip. Trip leaders' telephone numbers are provided and they are happy to answer specific questions about their trips. **Please call the leader** a few days before the outing, unforeseen things can come up and plans may change.

Items to Bring:

All trips will require sturdy hiking shoes, drinking water (it is unsafe to drink stream water), rain gear, warm clothing and insect repellent. A hand lens is helpful for up close plant identification. You may also wish to bring your camera, binoculars, field notebook, and lunch or snack.

Caution:

These are not plant collecting trips! Digging plants and/or collecting specimens is strongly discouraged by the ANPS. Collecting is illegal in many of the locations we will visit.

Meeting Place:

Unless specifically noted in the field trip description, the common meeting place for ANPS field trips is the Southeast corner of the Sears Mall parking lot, located at the intersection of Benson Boulevard and the New Seward Highway. Trip leaders will wait a few minutes for latecomers, but please be prompt.

Celebrating Wildflowers:

A celebration of our native wildflowers is being arranged through various agencies and organizations. Watch for events publicized in the Anchorage Daily News or call Debbie Blank at

Thank you to Field Trip Leaders:

This summer schedule is the result of the efforts of ANPS members in suggesting and arranging outing. Thank you to everyone who gave their time toward providing these botanical opportunities!

**May 26 - Monday (Memorial Day):
Nancy Lake Recreational Area (State Park)
Bald Pond**

Leader: John Wenger ()
Time Allotted: 5 hours
Meeting Time: 9:00 a.m.
Meeting Place: Tulik Trail Parking Lot. (Take the Parks Hwy. to Mile 67.2, turn left onto Park Roadway, follow to milepost 3 at the Tulik Nature Trail Parking Lot)
Level of Difficulty: Easy

Professional naturalist John Wenger will lead our annual joint field trip with the Anchorage Audubon Society. We will meet at the Tulik Trail Parking Lot and then follow John to Bald Lake (Tulik is unavailable due to broken boards on the boardwalk). Highlights usually include common loons, blackpoll warblers, wild orchids, and bog plants. Be sure to bring lunch, insect repellent and water-proof footgear. Allow approximately 1 hour and 45 minutes to get to Nancy Lakes from Anchorage.

**May 27- Tuesday:
APU Woodlands**

Leader: Verna Pratt ()
Time Allotted: 2 1/2 hours
Meeting Time: 7 p.m.
Meeting Place: Parking Lot across from Grant Hall (1st parking area on the right)
Level of Difficulty: Easy
Minimum age: None



We will walk the trail between Grant Hall and KAKM and circle around the University. Be sure to wear proper clothes and bring mosquito repellent.

**June 7- Saturday: Girdwood-
Virgin Creek, Surrounding Wetlands**

Leader: Ginny Moran ()
Time Allotted: All day
Meeting Time: 7:30 a.m.
Meeting Place: Carrs Huffman Parking Lot (SW corner)
We'll carpool to Girdwood (40 minutes)
Level of Difficulty: Moderate
Minimum age: 10

Join Anchorage Audubon members for a combined birding and plant trip through the old Sitka spruce forest and riparian habitat of Virgin and Glacier Creeks. If folks

are willing, the hike can be extended to wet areas and muskegs of Girdwood valley. Come explore the hidden treasures of Virgin Creek and Glacier Creek trails. Bring rain gear, knee high boots, water, snacks and bug repellent.

**June 8- Sunday:
Hidden Lake**

Leader: Marilyn Barker ()
Time Allotted: All day
Meeting Time: 8:30 a.m.
Meeting Place: Glen Alps Parking Lot
Level of Difficulty: Moderate (8 miles round trip)

This beautiful hike, approximately 8 miles round trip, will take us to alpine tundra, where we will check out the alpine flowers and see how many different species of willows we can find.

**June 10- Tuesday: New Trails Above
Upper O'Malley Trailhead**

Leader: Kathy Burke ()
Time Allotted: About 2 hours
Meeting Time: Call leader
Meeting Place: Upper O'Malley Trailhead (Drive up Upper O'Malley Rd., turn Right onto Trail's End, left onto Longhorn, left onto Cobra, right onto Shebanoff and follow it to the top where the parking area is)
Level of Difficulty: Easy



We will explore up the gasoline, North on Hemlock Knob Trail, down the powerline trail, and South along White Spruce Trail. Beautiful hemlock forest and views of town.

**June 11- Tuesday:
Strawberry Bog Stroll**

Leader: Kathy Burke ()
Time Allotted: 1 - 2 hours
Meeting Time: Call leader
Meeting Place: At junction of Strawberry and 80th
Level of Difficulty: Easy

We will walk a path through a boggy area to a birch lined pond. Hopefully we'll see shrubby potentilla, leatherleaf, bog rosemary, false meadowrue, iris, marsh cinquefoil and Labrador tea. Wear waterproof foot-wear.

**June 21- Saturday:
Little O'Malley and
The Ballpark**

Leader: Verna Pratt ()
Time Allotted: 6-7 Hours
Meeting Time: 8:00 a.m.
Meeting Place: Glen Alps Parking Lot
Level of Difficulty: Moderate

This joint trip with the Anchorage Chapter of the Audubon Society will feature alpine tundra plants and birds. Enjoy numerous wildflowers while exploring for surfbirds, horned larks, American pipits, white-tailed ptarmigan and gray-crowned rosy finches. Bring a packed lunch, waterproofs and sturdy footwear.

**July 9- Wednesday:
The Ramp**



Leader: Verna Pratt ()
Time Allotted: All day
Meeting Time: 9:00 a.m.
Meeting place: Glen Alps parking lot (or Sears Mall parking lot 8:30 a.m.)
Level of Difficulty: Easy to Moderate
Minimum age: 5

We will walk South on the powerline trail, across the creek and up the Ramp. Bring along a light weight pair of tennis shoes for stream crossing (or wear hefty ones and walk them dry). Wear shorts or loose leg trousers that you can roll up for creek crossing. Bring lunch, drink, warm clothes and bug repellent.

**July 12- Saturday:
Hatcher Pass
Archangel Road**



Leader: Nancy Krieger ()
Time Allotted: All day
Meeting Place: Sears Mall Parking Lot
Meeting time: Call leader
Level of Difficulty: Moderate

We'll explore up the valley to the Lane Cabin, and see what kinds of flowers are there. About 5 miles round trip, 1500' elevation gain.

**July 20- Sunday:
Twin Peaks**



Leader: Verna Pratt ()
Time Allotted: All day
Meeting Time: 8:30 a.m.
Meeting place: Sears Mall Parking Lot (regroup at Eklutna Lake "Day Use" Parking Lot about 9:30)
Level of Difficulty: Moderate, but very long trail
Minimum age: 5

We will hike up through woodlands into alpine and up to the peaks. Wear good hiking shoes (trail may be slick if it has been rainy). Bring lunch, drink and adequate clothes for the weather.

**August 2- Saturday:
Arctic Valley
Blossoms and Butterflies**

Leaders: Susan Willhoft () and Carol Lloyd
Time Allotted: 2 - 3 hours
Meeting Time: 11:30 a.m.
Meeting place: Sears Mall Parking Lot (regroup at Alpenglow Ski Area at 12:30 a.m.)
Level of Difficulty: Moderate
Minimum age: None

We will climb into the alpine area to find flowers and their associated butterflies. Carol described butterflies at an early winter meeting. If you were enthused by her slide show of beautiful butterflies in the Anchorage area, this will be a great opportunity to familiarize yourself with which flowers attract which butterflies. Bring water, snacks, appropriate clothes and hiking boots.

August 3- Sunday: Sally K's Garden

Leader: Sally Karabelnikoff ()
Time Allotted: 2 hours
Meeting Time: 10:00 a.m.
Meeting place: 7435 Old Harbor Ave., the next street past the new Fred Meyers, between E. 10th and E. 6th. The house is on the corner of Old Harbor Ave. and Creekside. Plenty of parking available.
Level of Difficulty: Easy
Minimum age: Children must be supervised as Sally has many precious plants on her grounds.

Sally Karabelnikoff is hosting this visit to her gardens. Much of the garden is natural woodland, with small areas of bog and other habitats. With luck, some of her orchids may be blooming.

**August 9- Saturday:
Ptarmigan Lake**



Leader: Verna Pratt ()
Time Allotted: All day
Meeting Time: 9:00 a.m.
Meeting place: Ptarmigan Lake Trailhead (at Ptarmigan
Creek Campground, Mile 23.2 Seward Hwy.,
turn right into parking area just past the gate)
Level of Difficulty: Easy to Moderate
Minimum age: 4

A nice hike through the woods, up to Ptarmigan Lake,
into alpine meadows. About 7 miles round trip. Bring
proper clothes, lunch, and a happy outlook if it's raining!

**August 9 & 10 - Saturday & Sunday:
Kachemak Bay Hike & Kayak**

Leader: Dottie & Rick Harness

Time Allotted: All day
Meeting Time: Contact Leader
Meeting Place: Contact Leader
Level of Difficulty: Easy

Leave Homer Harbor via water taxi to Tutka Bay, where
we'll begin exploring the intertidal sea vegetables. As the
tide rises we'll follow a stream for 1 mile, climbing 300'
elevation through Alaska spruce forest, laden with moss
and ferns. Rowboat and hike around a fresh water
mountain lake amongst the loons and Labrador tea
bushes.

Spend Saturday night at Sadie Cove Wilderness Lodge
where dinner, accommodations, sauna, and Sunday
morning breakfast are provided. A sack lunch will be
packed for your kayak adventure (No experience
necessary). We'll paddle amongst the bulb kelp while
viewing otters, porpoises and seabirds. Return to Homer
4-5 p.m., Sunday, Aug. 10th.

8/9 and 8/10 -- Water taxi, day hike, overnight
accommodations, meals, guided kayak adventure, and
sales tax comes to \$249. Make check payable to:
Seaside Adventures

Seaside Adventures
Rick and Dottie Harness
Red Mt.
Homer, AK 99603

**August 16- Saturday:
Gull Rock**

Leader: Marilyn Barker ()
Time Allotted: All day
Meeting Time: 9:00 a.m.
Meeting Place: Sears Mall parking lot (SE corner)
Level of Difficulty: Moderate

Hiking the Gull Rock Trail we'll have a chance to see lots
of mosses, and maybe some blueberries.

**August 23- Saturday:
Arctic Valley - South Fork of Eagle River
Traverse**

Leader: Sue Jensen ()
Time Allotted: All day
Meeting Time: 9:00 a.m.
Meeting place: Sears Mall, SE Corner (Regrouping
at 10 a.m. at Arctic Valley at the Alpen Glo
Ski Area)
Level of Difficulty: Moderate
Reservations By: August 21
Minimum age: 10

This traverse is a 5 - 6 mile trip, with an elevation gain of
1500 feet. We will hike up a "late blooming" valley on the
North side of the valley. A possible side trip could
include the summit of Rendezvous Peak. Blueberries
should be abundant on the Hiland Rd. side of the trip.
Bring a lunch, water, and weather proof gear. **Please
call Sue to make reservations, as a car shuttle is
necessary.**

**August 30- Saturday:
Kepler Bradley Lakes (Palmer)**



Leader: Verna Pratt ()
Time Allotted: 6 or 7 hours
Meeting Time: 9:00 a.m.
Meeting Place: Sears parking lot (regroup at Kepler
Bradley Park)
Level of Difficulty: Easy
Minimum age: None

This is a very nice Park on the North side of the Glenn
Hwy., just past the Parks Hwy. cut-off. An easy walk
through woodlands around lakes.

**September 3- Wednesday:
Glen Alps**



Leader: Verna Pratt () and Ginny Moore
Time Allotted: About 5 or 6 hours
Meeting Time: 9:30 a.m.
Meeting Place: Sears Mall Parking Lot
(regroup at Glen Alps parking lot at 10:00 a.m.)
Level of Difficulty: Moderate
Minimum age: 4

We will start from Glen Alps, walk up to the saddle by Flattop to see *Gentiana platypetala*, the Broad Petaled Gentian, and walk down toward Upper De Armond Rd. to Ginny's house. Fall color should be great! Bring drink, lunch, and warm clothes (it could be frosty).



SPRING PLANT SALES

Wildflower Garden Club

**Saturday, May 31, 1997
9 a.m. - 4 p.m.
7435 Old Harbor Ave.
(Muldoon)**

Native plants, annuals and perennials.
Plants are from the gardens of members.

Plants for sale include: chocolate lillies, columbine, ferns, forget-me-nots, iris, shooting stars, monkshood, lupine, rhubarb, vegetables, hardy roses, raspberry, strawberry, herbs, small trees, poppies, trollius, Jacob's ladder, delphiniums and many others.

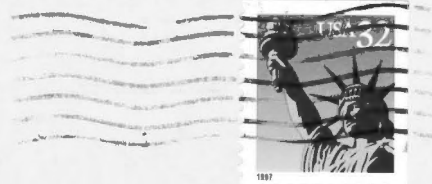
Anchorage Garden Club

**Saturday, June 7, 1997
8 a.m. - 5 p.m.
(or until sold)**

3734 W. 35th Ave.

For more information
call the Hotline at

Alaska Native Plant Society
P.O. Box 141613
Anchorage, AK 99514



IS YOUR MAILING LABEL CORRECT?

Please take a moment to check your mailing label and make sure your name, address
and your renewal date are correct.