

# Borealis

the newsletter of the



October 1992

P.O. Box 141613, Anchorage, AK 99514

**ANPS STATE OFFICERS ARE:** President---Forrest Baldwin, Vice-President---Jean Poor, Secretary---Jean Tam, Treasurer---Yaso Gurusingan-Thiru, Newsletter (appointed)---Frank Pratt

**ANCHORAGE CHAPTER OFFICERS ARE:** President---Gary Davies, Vice-President---Charles (Chuck) Adsit, Secretary---Andrea Woods, Treasurer---Ram Srinivasan, Rep. to State Board---Frank Bogardus

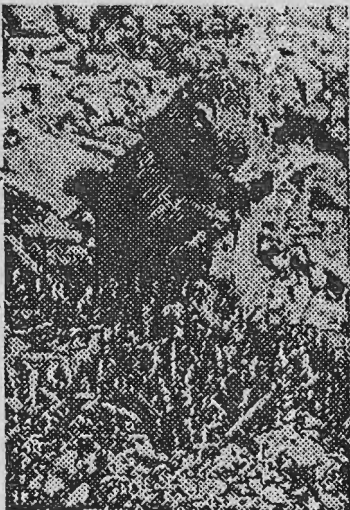
## MEETING NEWS:

The October meeting of the Anchorage Chapter will be held on Monday, October 5th, at 6:30PM at the First Congregational Church, 2610 East Northern Lights Blvd. This is the large brown church building just east of Wendler Jr. High School on the south side of Northern Lights. Entrance is at the back of the church (east side).

**BOARD MEETING---**No Board of Directors meeting this month due to the early meeting time.

**PROGRAM---**This is our annual Pot-Luck Meeting. Bring a Baked Dish, Vegetable, Bread or Dessert to serve 3 times the number of people in your group. ANPS will provide hot and cold beverages, paper plates, and plastic utensils. You may bring sturdier plates and utensils if you wish. Guests are always welcome. This is a fun meeting. Bring slides (10 or more) of summer activities and/or plants. Frequently, we have time for extras, and everyone enjoys seeing some new plants or reviewing our summer activities. We will supply hot drinks,

juice, paper plates, cups, and plastic utensils. If you prefer, you may bring your own.



Denali Park resident appreciating wildflowers

## MYSTERY PLANT:

A single, large, blue, bell-shaped flower which almost overwhelms its tiny supporting plant. An alpine plant found in open, rocky areas or high meadows. Widespread throughout the alpine regions of the State. Remember that in the far north, alpine ecosystems often reach down to sea level!



Mystery Plant

Drawing by Toby Tyler

## FIELD TRIP OVERVIEW:

Many thanks to all who lead field trips this year. "Out in the Field" is where the most learning occurs. A double thanks, also, to all who attended, as helping others learn is the backbone of our organization and is what makes it all worthwhile. We were all beginners once, so we know the value of kind helpfulness and we all can still learn from everyone else. I can only address the field trips that I attended, so please don't take offense if your trip is not mentioned here.

Of special interest was the trip to Wishbone Hill near Sutton on Mzy 17th. A strenuous, but wonderful, trip to a hill up into low alpine - all composed of conglomerate rock. It looked like a rough "concrete" hill. We found fossil rocks and lots of spring flowers.

It looks like we need to do an early Wildflower Garden tour again another year as it was very well attended and with great enthusiasm.

The Bison Gulch Trip on June 6th, followed by Kantishna Hills in Denali Park, was a great success. All that attended has a marvelous time and are ready to go again. A great place and the early access into the Park was wonderful.

The Crescent Lake Trip on June 14th -- another episode in our continuing search for *Douglasialaebeulsis* - was fun; but, again, met with no success.

The Chester Creek Bike Trail Trips on June 17th and 24th were well attended and interesting. It's surprising how many Choke Cherry trees are sprouting in the wilderness. Undoubtedly, birds are responsible. Finding a Canada Dogwood with variegated leaves was a pleasant surprise.

Sorry about the cancellation of the Byers Lake Trip - hope everyone received their notice in time, and thanks to Joe Blazek for "showing up" just in case.

We had a good time, as usual, on July 14th at Reed Lakes; and, George Newman, a visitor from New Hampshire, was more than pleased.

The Seed Collecting Trip on August 21st was held at Falls Creek Trail on the Seward Highway. There is never enough time for that trail. Yellow Willow Herb and Broad-petalled Gentian were the highlights. Flowers were in full bloom in the high meadows --- "Spring in August." Geraniums, Monkshood, Violets, etc. were in abundance.

We conducted no business at the Annual Meeting at Kepler Bradley Lakes on September 19th because not enough Board members showed up -- but we had a great time in the fall color, rain and snow. The trail around the lake has deteriorated since we last saw it. As we went around the lake, we recalled our childhoods climbing through barbed-wire fences and had a new experience of climbing over them on well-placed step-ladder arrangements.

See you at the meeting!

---Submitted by Verna Pratt

---

## QUIZ ANSWER:

Mountain Harebell, *Campanula lasiocarpa*. Members of the Bluebell family (Campanulaceae) have bell-shaped flowers which have petals fused into a trumpet shape with 5 lobes flaring at the top.

---

We need a volunteer to do the seed exchange.